



FORM

at Mount Juliet



ARTISTIC
ALLIANCE

ARTISTIC ALLIANCE

Artistic Alliance is an organisation which partners artists from Ireland and abroad and facilitates their interests.

Gwenver

112 Clarkes Wood

Mount Oval Village

Rochestown

Cork, Ireland

t. +353 (0)21 489 8347

m. +353 (0)87 919 0615

e. richiescott@artisticalliance.eu

w. www.artisticalliance.eu

Cover image:

Velvet Crab by Jason Ellis

Siltstone/Kilkenny Limestone on Cedar Plinth

Ht. 68cm

Photo. Ros Kavanagh

FORM

at Mount Juliet



Elfin Ear
Indian Sandstone
15cm x 50cm
Photo: John Beasley

FORM

at Mount Juliet 2013

Outdoor Sculptural Exhibition
(Rose and Walled Gardens)

Wednesday July 17th
to Sunday September 1st

Open daily 9am–9pm

Admission Free

Contact:
richiescott@artisticalliance.eu
or 087 919 0615

We are very excited to present to you, FORM at Mount Juliet 2013. This outdoor sculptural trail presents a wide variety of artwork from Irish and International artists. The family friendly trail walks you through the beautiful Rose and Walled Gardens of Mount Juliet Estate. We thank you for your continued support and custom. We look forward to bringing you quality art from Irish and overseas artists, whom we are so privileged to represent. Is mise le meas.

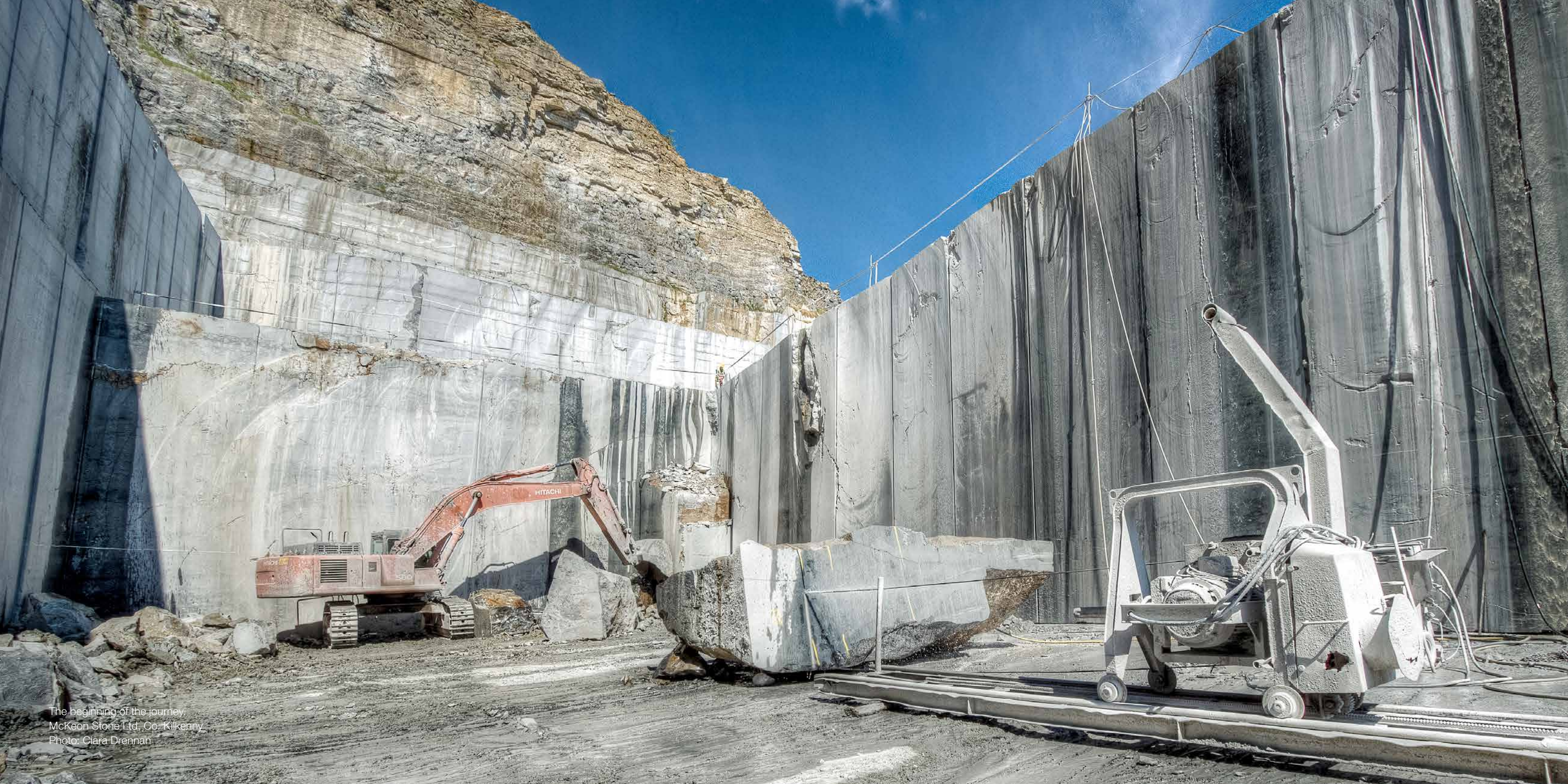
Richard Scott

Richard Scott, Artistic Alliance



Drift by Moss Gaynor
Mild Steel
360cms x 60cms
Photo: John Beasley





The beginning of the journey,
McKeon Stone Ltd, Co. Kilkenny.
Photo: Clara Drennan



Stephen Burke

Stephen Burke is an Architectural Sculptor who works from his Studio in Dublin 15. He has worked on many large-scale projects throughout Ireland and the UK, ranging from contemporary public art commissions to restoration to architectural projects. Stephen continues to work on large-scale projects and also on private sculpture and lettering commissions. Restoration practices also inform his new work - by providing a grammar with which to develop new ideas. He is particularly interested in and inspired by working with other people, whether collaborating with other professionals or communities. Stephen also lectures part-time at the City & Guilds of London Art School.



Left: Medieval Museum, Bath Stone, Waterford City
Right: River God, Portland Stone, 70cms x 40cms x 32cms

Richie Perry



Richard Perry has concentrated on making sculpture for the majority of his career. Painting and drawing have also always been important both as a way of thinking through ideas and as finished work. He has a strong interest in landscape and the environment and regularly spends time taking photographs of local landscapes including the veteran oaks of Sherwood Forest.

Richard has exhibited widely, showing drawing, painting and sculpture in many public and private galleries, including the New Art Centre at Roche Court; Anna Bornholt Gallery, Hart Gallery and the Contemporary Art Society Market in London; and the RHA annual in Dublin.

He has extensive experience of sculpture commissions for public realm, corporate and private clients, including large scale works in bronze, stone, architectural ceramics, slate and

marble. Notable projects include 'Starstone', Armagh; 'Freedom Tree' and 'Needle', St.Helier; 'Interlocking Oaks', the Boots Company HQ; 'Fountain Trees', Basingstoke; and the design and carving of the stone work for the re-modelling of the Peace Gardens in Sheffield, which won a RIBA National Urban Design Award.

Other awards include Royal West of England Academy national sculpture exhibition first prize, National Stone Federation award for 'Needle', RSA 'Art for Architecture' award for commissioned sculpture designs.

Richard has work sited in Europe, Japan and throughout the UK in many permanent public and corporate collections, including the EDA Garden Museum in Tokyo; the national collection of drawings and prints at the British Museum; GlaxoSmithKline; Grosvenor Estates and many local and metropolitan authorities.



Cube Stone (From The Red Earth)
Red Mansfield Stone
Ht. 30cms

Jason Ellis



Jason Ellis is a stone sculptor. Born in 1965 in Cornwall, UK, he learned stone carving at art school in the 1980s and during the 20 years he spent in the sculpture conservation profession. His works feature in numerous public and private collections. In 2010 he showed at the 12th Venice Architecture Biennale. Public works are sited at Bantry, Co. Cork, Galway City, UCD and Dublin Castle. His sculpture focuses on form, mass, abstraction and refinement of surface. His first solo show with the Oliver Sears Gallery, Dublin, titled 'Corpus', runs during September and October of this year.



Groin
Marble
Ht. 50cms



The Foolish Virgin
Kilkenny Limestone
Ht. 50cms



Spleen
Egyptian Limestone on base of Carrara
Marble and Kilkenny Limestone
Ht. 56cms



Richard Healy

Richard Healy is a Dublin born artist. He studied at NCAD, where he graduated in 2000 with an honours degree in Fine Art sculpture. Since leaving college Richard has work primarily in stone. Richards work is included in a number of private collections around Ireland and Europe. He won first prize in stone-carving at the RDS national craft show 2011. Richard was also commissioned in 2011 by the OPW to create two permanent sculptures for the sensory garden at Áras an Uachtaráin. Richard is currently creating a new body at his D15 Studios.

“My work to date has been very much influenced by nature and the botanical world around me.

In the plant life and nature around I find subject matter, shape and form. I take this lead from nature and follow and explore it. I convert these organic forms into something more architectural and formalised while maintaining a link to the Natural world they came from.

My stone of choice is Kilkenny Limestone. I find it a humble and modest material to work with. It has a wonderful consistency of stone and uniformity of colour that does not take away or distract from the sculptural form of the artwork. As a material it also offers a great array of textures and finishes.”



Venus Fly Trap
Kilkenny Limestone
30cms x 60cms



Tripod
Kilkenny Limestone
Ht. 150cms



Peapod
Kilkenny Limestone
Ht. 60cms



Limestone Lily
Kilkenny Limestone
55cms x 55cms



Redmond Herrity

I graduated from Leitrim Sculpture Centre in 2001. Since then I travelled extensively creating private and public commissions throughout Ireland and abroad. In 2003 I moved to Carrara in Italy to work with its world famous marble, and there I worked along with some of Italy's master sculptors. Amongst the awards I have won are "Sculptor of the Year" 2009 by the Royal Hibernian Academy and "The Derek Hill Award" in 2012.

I am enthused by the timeless concerns of the ancient craft of stone carving, and my mind and work is shaped both by contemporary art and by enduring craft traditions.

I am fascinated in the paradoxes of softness and hardness that are created when pliable

materials are "turned to stone." For example, pieces of stone which appear to have been indented by the pressure of a finger or scraps of metal and folds of soft fabric, turned into unyielding marble; often so realistic as to fool the audience. Marble, of course, can't twist even a micron without cracking or shearing off, and the ambiguities of representing the soft with this hardest of sculptural materials has always fascinated me.

Stone carving takes an enormous amount of time, especially marble portraiture and figurative work. Being up before dawn to get started tapping, chiselling, drilling, filing, polishing is no sacrifice, since the work I create is both my art and my pleasure.



Indent
Carrara Marble
Ht. 45cms



Dreamer (Self Portrait)
Carrara Marble
20cms x 40cms



All Washed Up
Carrara Marble
Ht. 45cms



Squeeze Box
Kilkeny Limestone
60cms x 60cms x 30cms



Moss Gaynor

Moss Gaynor is a sculptor and designer based in Clonakilty, Co. Cork. Primarily self taught, he works with a variety of ferrous and non ferrous metals often complimenting same with stone, glass and wood.

It is the ever-changing dynamic of West Cork, where land meets sea meets sky, which provides an eternal source of inspiration. This coupled with a deep rooted appreciation of architecture and industrial design informs the aesthetic of the sculptural pieces that he creates.

His current body of work is heavily influenced by his passion for the sea, being a self confessed “surf addict” it is never far from his thoughts ...



Drift by Moss Gaynor
Mild Steel
360cms x 60cms
Photo: John Beasley



Martin Lyttle

As a stone sculptor and previously as an Engineering Geologist, Martin Lyttle has always been fascinated by stone/rocks and soil that make up the physical landscape and also the geological/geomorphological processes that has formed the landscape. His work has concentrates on natural organic forms. He explores the sculptural form and over all shape and also the divisions, segmentation, ridges, ribs, lobes of the subject matter in conjunction with the type, composition and texture of the stone he is working.



Earthworks
Carlow Granite
200cms x 150cms x 70cms



Krystyna Pomeroy

Krystyna Pomeroy lives on the Loop Head peninsula in County Clare. Whether working in the medium of clay, paper or metal, the primary focus is form, followed closely by the “how” of construction. Initial sketches evolve into 3D blueprints. In many of her animal sculptures there is a paring down to essential features and the use of flat planes. Over the past thirty years Krystyna has exhibited in a number of galleries in Ireland and the UK. Her most recent works in bronze have sold through Adam’s of Dublin.



Seated Hare
Speckled Grey Bronze
Ht. 51.5cms (1/9)



Speckled Hen
Bronze
Ht. 45cms (unique)

Krystyna Pomeroy

Helen O'Connell



Native Dubliner Helen O'Connell graduated from Trinity College Dublin with first-class honours in English literature and Art History before surrendering to a fascination with stone sculpture. A determination to learn the ancient craft of stone carving led her to North Leitrim where she trained under Seamus Dunbar, Jackie Mc Kenna and Martha Quinn at the Leitrim Sculpture Centre in Manorhamilton. Having fallen in love with the bleak beauty of the local landscape she spent several years in Leitrim working from her cottage studio and teaching at the Leitrim Sculpture Centre. Studies in the art of marble carving were undertaken in the famous Nicoli studios in Carrara, Italy where she immersed herself in the skills and expertise of generations of artisans. Further pursuit of marble then led the sculptor to the marble quarries of Alentejo, Portugal where she worked for lengthy spells selecting the stone for her sculptures. Studies into the discipline of the realistic figurative-sculptural tradition have been undertaken under Robert Bodem at the Florence Academy of Art. The artist currently

works from her studio at home in Wicklow, in D15 studios in Dublin and occasionally in Portugal and Italy. Helen O'Connell's sculpture has been exhibited at the RHA, Sculpture in Context, The Talbot Gallery, Iontas, Jorgensons Fine Art, The Mermaid Arts Centre, Gormleys Fine Art, The Back Loft at La Catedral Studios, The Waterfront in Belfast, Galerie Donkerswort in The Netherlands and Galerie Exelmans in Brussels amongst others. Her work is featured in many private collections nationwide and beyond including that of Bono and Anne Madden and in public collections such as that of the HSE. Whyte's 'Buyer's Guide to Irish Art 2006' cite her as an artist to look out for. The sculptor is also a member of the Arts Council funded collective RANT with which she has exhibited in Donegal and Belgrade in Serbia. She has been awarded a residency bursary at the Tyrone Guthrie Centre where she absconds when possible to focus on the development of ideas and research. Carraige na farraige is her second solo exhibition.



Coral Study 1
Portuguese Marble
124cms x 52cms x 20cms



Marine Study 1
Portuguese Marble and Kilkenny Limestone
80cms x 24cms x 24cms



Marine Study 2
Portuguese Marble and Kilkenny Limestone
60cms x 22cms x 14cms

Holger Lönze



Holger Lönze is a West-Cork based sculptor. He studied architecture before turning to printmaking and sculpture in Belfast where he completed his studies with a PhD. After working as a researcher for the Eden Project, Cornwall, he returned to Ireland in 2004 to work on public commissions in the Republic and the UK and as artist in residence for various county councils. He has exhibited widely and is represented in collections in the UK, Ireland, Italy, the US and Germany.

Holger's bronze sculpture is a poetic response to Europe's Atlantic seaboard: its rich maritime culture, folklife, archaeology and coastline. His experience in the arts and crafts feeds into works of abstract realism that are rooted in traditional materials and techniques while being contemporary in concept and context. The inspiration for both Holger's sculpture and drawings comes directly from literary accounts of ancient voyages, local cultural heritage as well as

sea journeys undertaken in self-built curachs.

Shapes of boats, sails and waves together with wings and beaks of sea birds all filter into the visual language of his work, creating complex sculpture where multiple intersecting forms occupy a common space in time. The combination of solid mass, rich texture, vibrant blue patinas and polished highlighting evokes connotations with megalithic monuments when viewed from afar while suggesting turbulent seascapes when seen close-up.

Holger's concern with sustainable working methods is reflected in his application of low-carbon experimental Bronze Age casting methods and the use of regenerative and recycled materials together with direct metalworking techniques such as repoussé.

www.holgerlonze.com



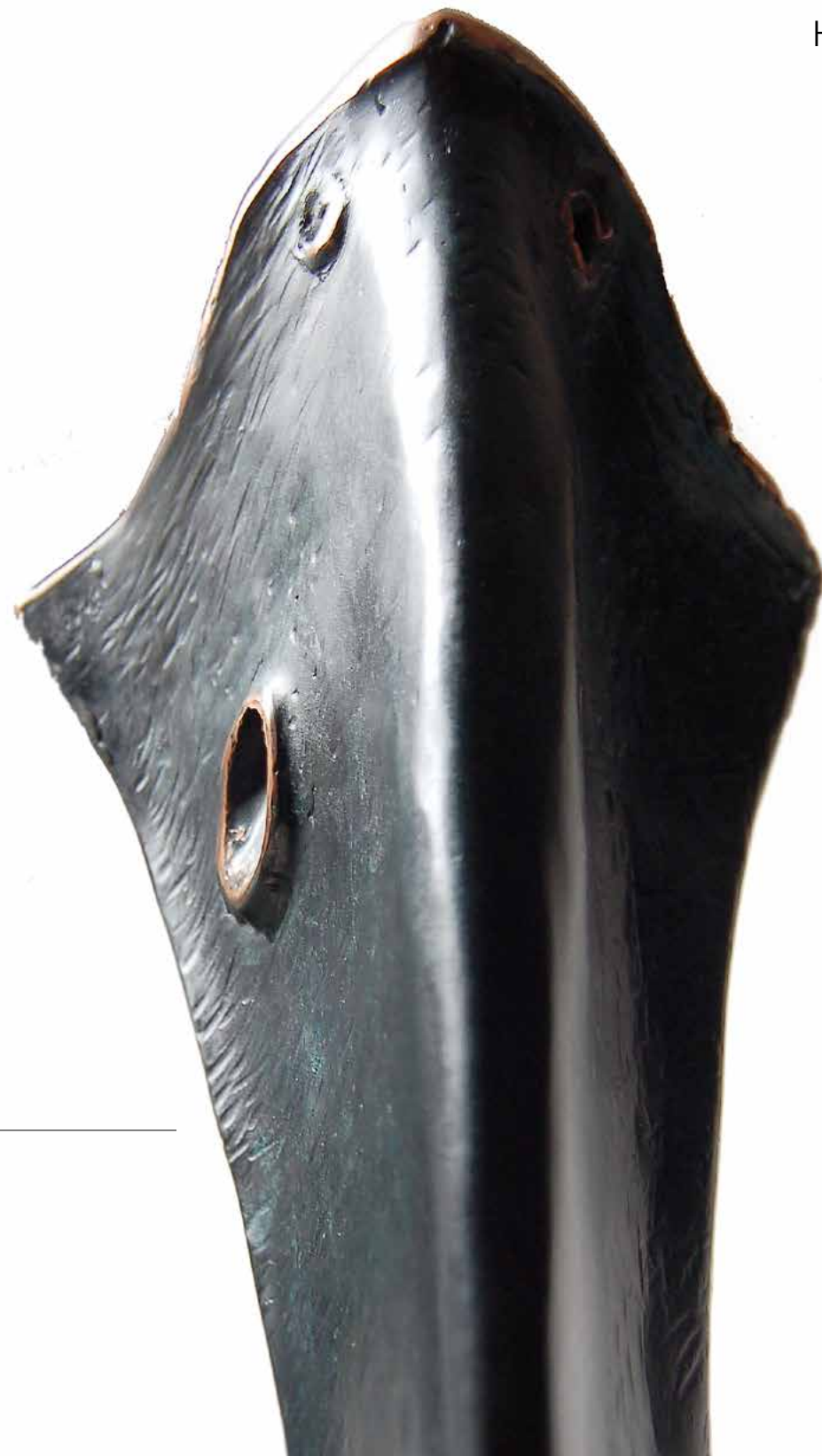
To the people of the sea
(maquette for Portrush)
(Unique)
Repoussé bronze
Ht. 42cms



Salmon Leap
(Unique)
Repoussé bronze
Ht. 100cms



Béal Toinne (Bow Wave)
(Unique)
Repoussé bronze
Ht. 108cms





Bojana Krisanec

“My work usually starts with the idea. Then I choose the media I am going to use. It could be ceramics, stone, photography, video, performance.

I am interested in contrasts like good and bad, black and white, male – female, strong – weak. In ceramics I use strong contrasts in black unglazed surface and white glaze. It emphasizes the graphical effect and helps me tell many stories using just two colours with some help of red or gold.

I fell in love with stone few years ago. Stone is bursting with energy. Almost every stone wants to be something. And it wants the artist to help him show it. Work with stone starts slow, like meeting a new friend. More and more time you put in it, the more you get in return. The stone seduces us, entices us to touch it and returns the energy. I shape the stone into organic forms, round and gentle, although heavy in weight.”

Bojana Krizanec comes from Slovenia. She completed the study of sculpture and ceramics at the Famul Stuart High School for Art in Ljubljana.



Pine Cone
Kilkenny Limestone
Ht. 38cms



Martha Quinn

Martha Quinn was born in Ireland in 1975 and studied at DLIADT from 1992-1995 graduating with a distinction in sculpture and print.

Subsequently Martha Quinn has gained a national reputation through her sculpture, paperworks (drawings, prints and cut-paperwork) and most notably her numerous public sculptures. To date she has won over twenty commissions funded under the percent for art scheme across Ireland and recently internationally, with a commission for Europol headquarters in The Hague. For two years she was a stone-carving tutor at the Leitrim Sculpture Centre.

Her practice is informed and inspired by a wide variety of subjects including science, nature, craft, and architecture. In her public commissions her interest in these subjects are sometimes referenced directly in a representational way while in her other work the elemental forces that connect these interests manifests in abstract geometric patterns and structures.

A key element in Quinn's public sculptures has been to create artwork that is integrated with its physical and geographical environment but also with its social, historical and cultural context also, and so each work is completely site-specific.

Her work has been shown in Olivier Cornet Gallery, The Norman Gallery, The Hamilton Gallery, The Dock, The Basement Gallery and the RHA. In 2012 she was invited to show at the 182nd annual RHA exhibition and Uddenskulturs International Sculpture Exhibition, Sweden. Her work is part of numerous public and private collections and has recently been acquired by the OPW.



Sundown
Kilkenny Limestone
Diameter 50cms



Opposite page:
Lunula
Marble with 24ct gold leaf
Ht. 65cms

Equinox Day
Kilkenny Limestone
Ht. 50cms

Equinox Night
Kilkenny Limestone
Ht. 50cms

Don Cronin



Don Cronin studied sculpture to degree level at the Crawford College of Art and Design, graduating in 1994 having previously completed a BA in Philosophy at UCC. He is now based in his studio near Innishannon, Co. Cork.

He has had a long association with the National Sculpture Factory in Cork and county councils including Kerry, Cork, Mayo, Leitrim and Tipperary and Limerick have commissioned work from the artist under the Per Cent for Art Scheme. His work features in several public and private collections here and abroad including those of UCC, UCG, Mr Dermot Desmond at the IFSC, and the City Hall of San Francisco. His work is also included in The Civic Art Collection of San Francisco. He works in a variety of materials but most often in bronze and stainless steel.

Don Cronin is probably best known for his work in the public art arena, though the last year has seen the artist focus on a series of smaller works and one person shows.

This recent work represents not so much a new direction for the artist, as a recovery of themes from earlier in his career. The intervening years have allowed for a honing of technique, but perennial concerns of balance, line and structure are superseded by an interest in tone, intuition and mood.

Though Cronin considers this body of work to be driven by nothing but his own intuition, he notes that “less of myself shows through here than in previous work. Some of this is down to the surface quality which offers few footholds. There is little drag to slow the eye and impressions are presented quickly. The notion of the visual response over-riding all other interests delights me. This primary perceptual response is fundamental to my understanding of aesthetics. I want the hand of the artist to disappear.”

“Imperfect lovers bring to Art and take away the emotions of their own age”.
(Clive Bell).



Westerly
Stainless Steel and Kilkenny Limestone
45cms x 18cms x 30cms



Kostes
Rosewood and Stainless Steel
113cms x 40cms x 36cms



Ox Blood Scenario
Bronze
220cms x 150cms x 15cms



Eileen McDonagh

Stone has been my medium for almost 30 years. With patience and a real desire it is possible to do almost anything with this material. The need to realize an idea in stone must always be stronger than the effort required to carry it out. It is a long slow process whither working on a big or small scale. There is a lot of time to consider what you are doing, make changes along the way and find out a bit more about the material (and yourself).

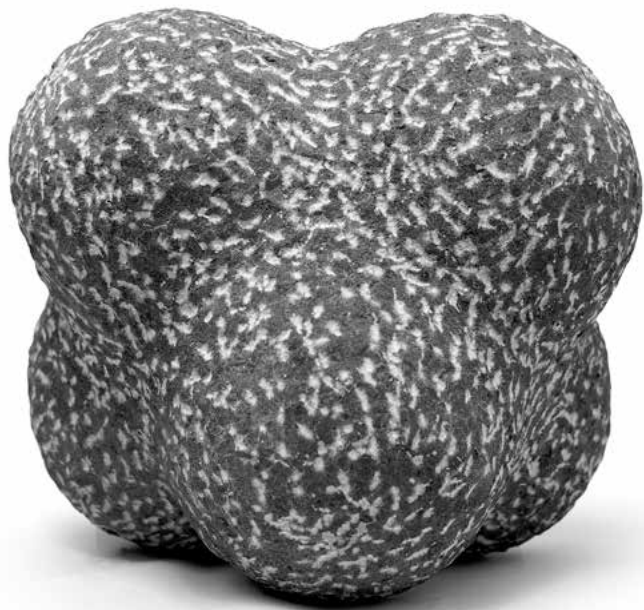
When working with limestone I tend to carve and shape the stone quite a bit. On the other hand with granite if I am lucky the material will reveal to me what I should do with it.



House
Kilkenny Limestone
Ht. 50cms
Photo: John Beasley



Asteroid
Kilkenny Limestone
Ht. 26.5cms



Jackstone
Kilkenny Limestone
Ht. 24cms



Star
Kerry Marble
Ht. 20cms

Acknowledgements

I would like to thank the artists for their infectious enthusiasm and skill, which helped to drive this ambitious project.

At Mount Juliet I would like to pay especial thanks to Colin Donovan, Anthony Brady, Julie Purcell and Shane McDonald, although kindness, courtesy and hospitality pertains to everyone on the estate.

In the engine room I thank Alan O'Shea (Graphics), John Beasley (Photography), John Waterman (Printing) and Niall Kavanagh of McKeon Stone who is a constant support to artists on many levels.

On a personal note I would like to thank Dec, Finnualla and Ronan for exposing me to the joy of art.



Richie Scott



Cut stone ready for the artist touch
McKeon Stone Ltd, Co. Kilkenny
Photo: Ciara Drennan



ARTISTIC
ALLIANCE

Price €5

