

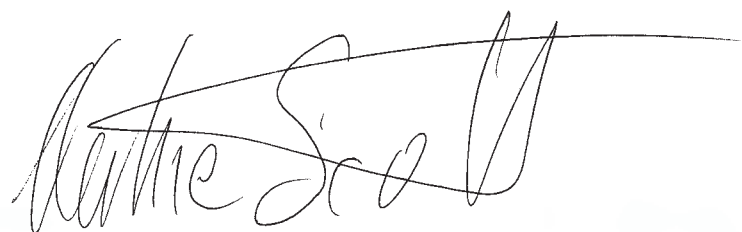


Silent Expression

ARTISTIC
ALLIANCE



We are delighted to present to you FORM16@Ballymaloe. This outdoor sculptural trail showcases a wide variety of artwork from Irish and International artists. This exhibition has over 90 pieces created by 31 sculptors and is sited in the beautiful front lawn at Ballymaloe House, Shanagarry, Co Cork. Artistic Alliance continuously strive to bring you quality exhibitions and thank you for your continued support and custom. Is mise le meas.



Richard Scott, Artistic Alliance

FRONT COVER:
Void II (LHS)
70cm x 17cm x 15cm
Void I (RHS)
83 x 15 x 12cm
by Sonia Caldwell
Limestone

THIS PAGE:
Wooly Sheep I, II & III
by Seamus Connolly
Unique Bronze
15cm x 28cm



Silent Expression

Opening on Midsummer's Day

Tuesday 21st June 2016

from 6.30pm to 8pm

Exhibition continues to 31st August 2016

Open daily from 9am to 9pm

Admission free

Contact:

richiescott@artisticalliance.eu

or 087 919 0615





The Unveiling
by Redmond Herrity
Carrara Marble
55cm x 80cm x 10cm

ARTISTS

Ester Barrett
Stephen Burke
Michelle Byrne
Rob Byrne
Sonia Caldwell
John Coll
Nigel Connell Bass
Seamus Connolly
Nuala Early
Jason Ellis
Mel French

Moss Gaynor
Richard Healy
Redmond Herrity
Bojana Križanec
Robyn Lawlor
Martin Lyttle
Eileen McDonagh
Tim Morris
David O'Brien
Elizabeth O'Kane
Niall O'Neill

Cormac O'Reilly
Patrick O'Reilly
Krystyna Pomeroy
Michael Quane
Martha Quinn
Vivienne Roche
Blessing Sayanga
Mathew Thompson
Gwen Wilkinson



Stone Sphere
by Michelle Byrne
Kilkenny Limestone
60cm



Tim Morris



Moss Gaynor



David O'Brien



Martha Quinn



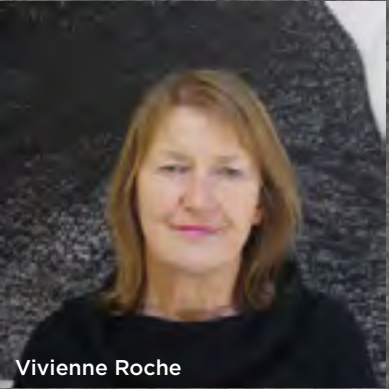
Gwen Wilkinson



Michelle Byrne



Ester Barrett



Vivienne Roche



Eileen McDonagh



Elizabeth O'Kane



Jason Ellis



Mathew Thompson



Rob Byrne



Niall O'Neill



Cormac O'Reilly



Robyn Lawlor



Nigel Connell Bass



Sonia Caldwell



Nuala Early



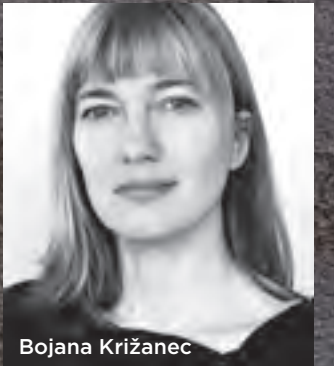
Patrick O'Reilly



Krystyna Pomeroy



John Coll



Bojana Križanec

Mel French



Redmond Herrity



Blessing Sayanga



Seamus Connolly



Richard Healy



Martin Lyttle



Stephen Burke



Michael Quane



ABOVE

Ululation (your lying tongue)
by Jason Ellis
Cork Red Limestone on Poured Lead Plinth
8cm x 28cm

OPPOSITE

Tracks
by Michelle Byrne
Limestone and Bronze
45cm x 26cm





Mater Matris

by Mel French

Jesmonite

16cm x 92cm x 19cm



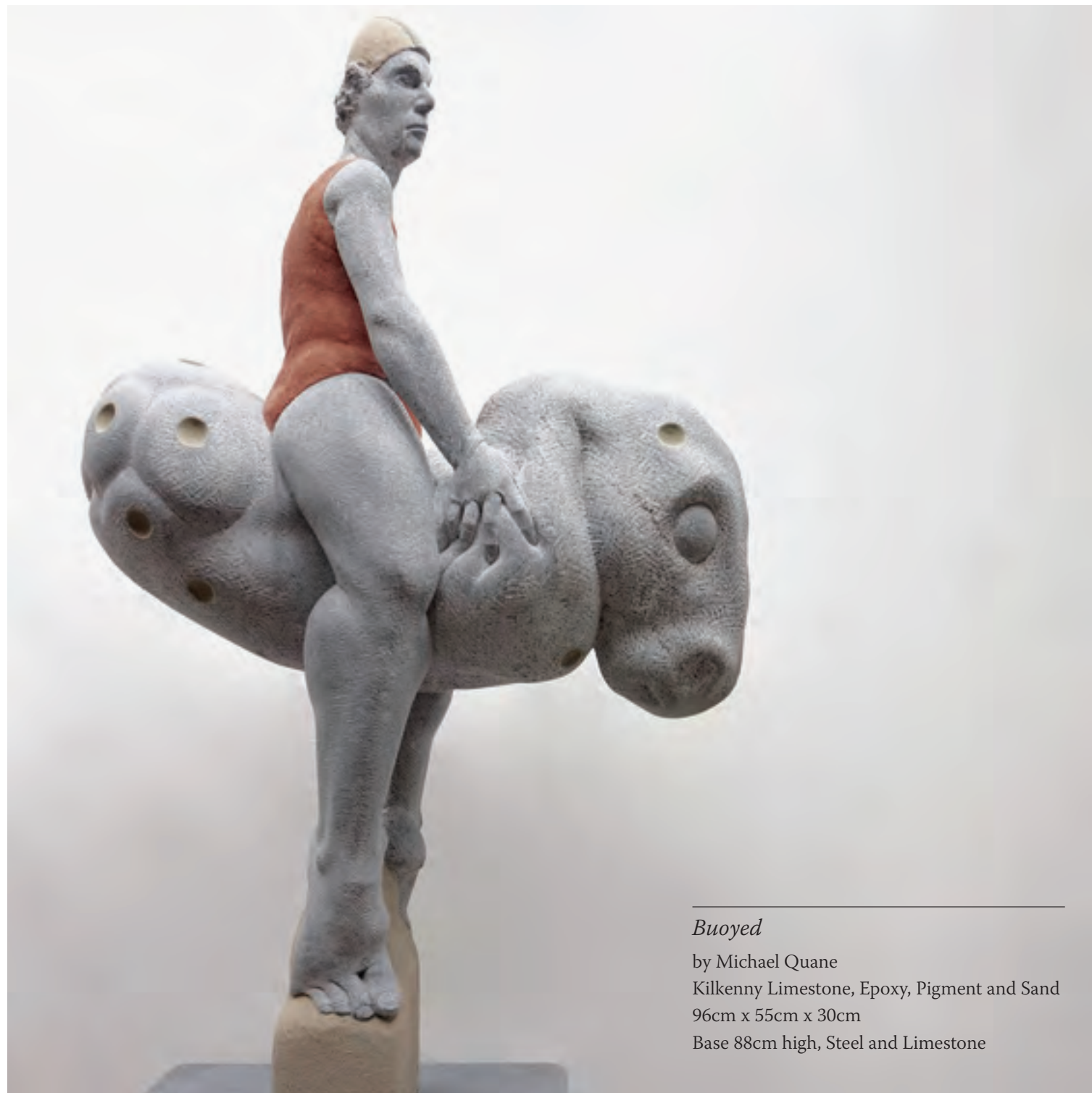
Seaweed I

by Martin Lyttle
 Kilkenny Limestone
 90cm x 20cm x 15cm



Mussel

by Martin Lyttle
 Kilkenny Limestone
 80cm x 35cm x 20cm



Making Buoyancy
 by Michael Quane
 Kilkenny Limestone
 64cm x 24cm x 47cm





LEFT

Lean on Me

by Nuala Early
Kilkenny Limestone
50cm x 20cm

OPPOSITE

Diving Gannet

by Rob Byrne
Travertine on Limestone Base
40cm x 18cm





The Separated

by Bojana Križanec
 White Carrara and Red Rosso Levanto
 12cm x 42cm x 14cm



Naomhóg

by Blessing Sayanga
 Kilkenny Limestone on Teak base
 94cm



ABOVE

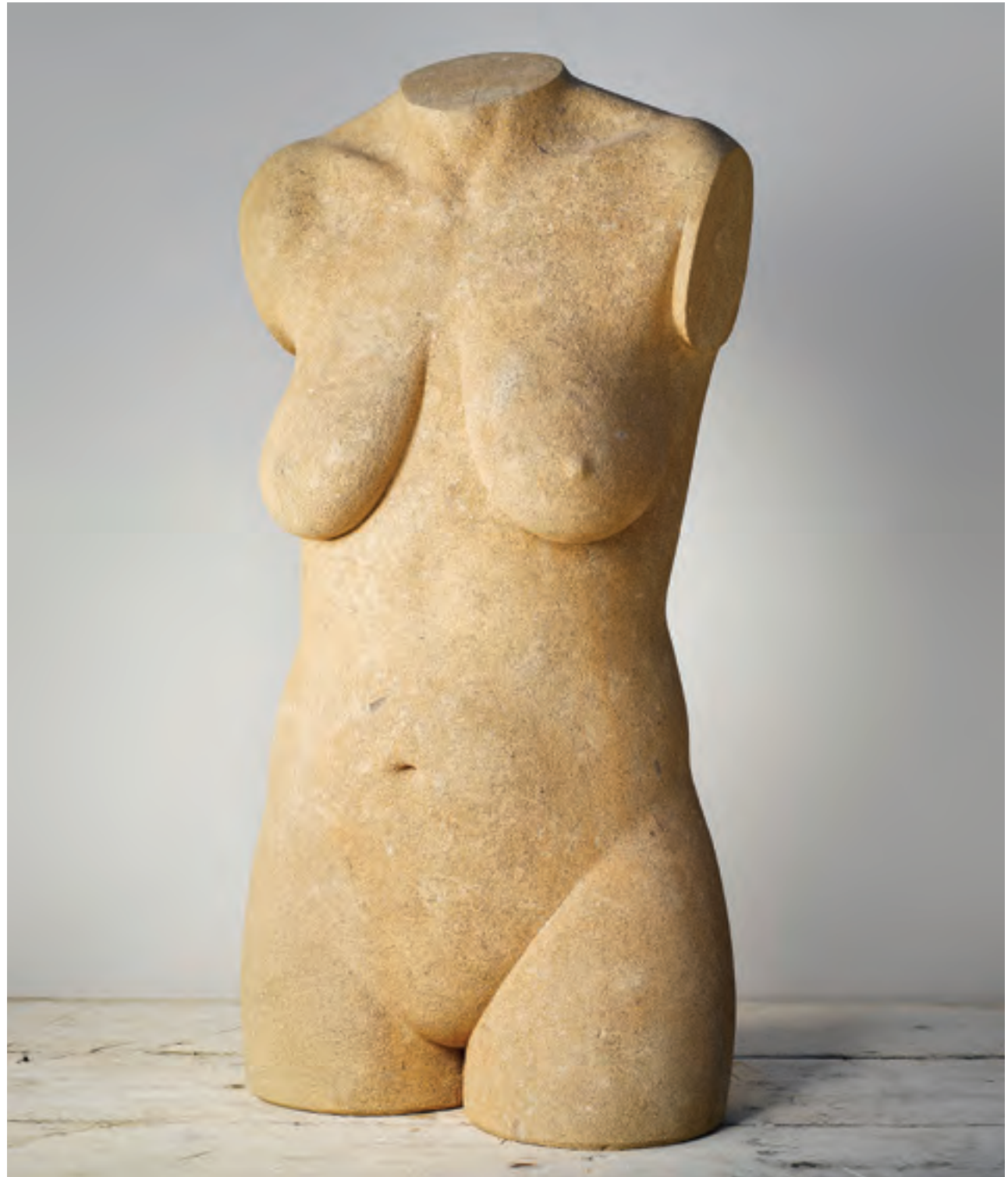
Sun Shield

by Martha Quinn
Carrara Marble, Sterling Silver and Gold Leaf
60cm

OPPOSITE

Prophetes

by Jason Ellis
Bathstone
74cm





ABOVE

Fleeting III

by Mel French

Jesomite

11cm x 22cm x 18cm

OPPOSITE

Trinity

by Richie Healy

Kilkenny Limestone

60cm x 30cm





Legacy of Faith
by Cormac O'Reilly
Irish Limestone
85cm x 30cm x 70cm



Unfurling
by Mathew Thompson
Kilkenny Limestone
30cm

RIGHT

Whale Song (Outcrop)

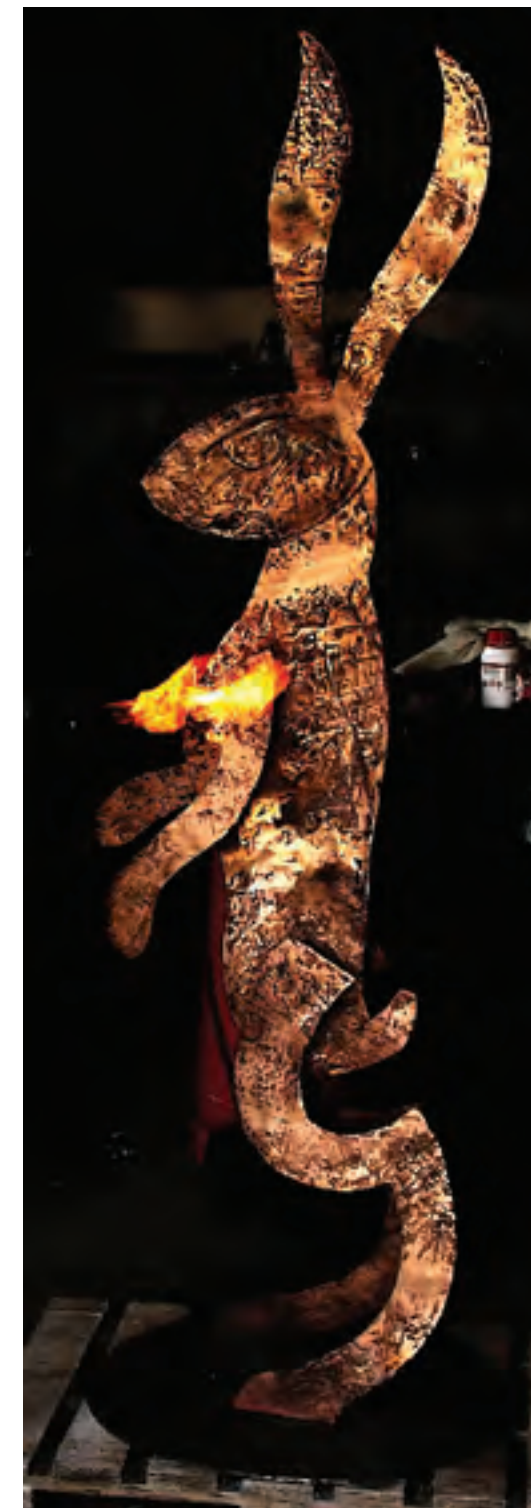
by John Coll
Stainless Steel

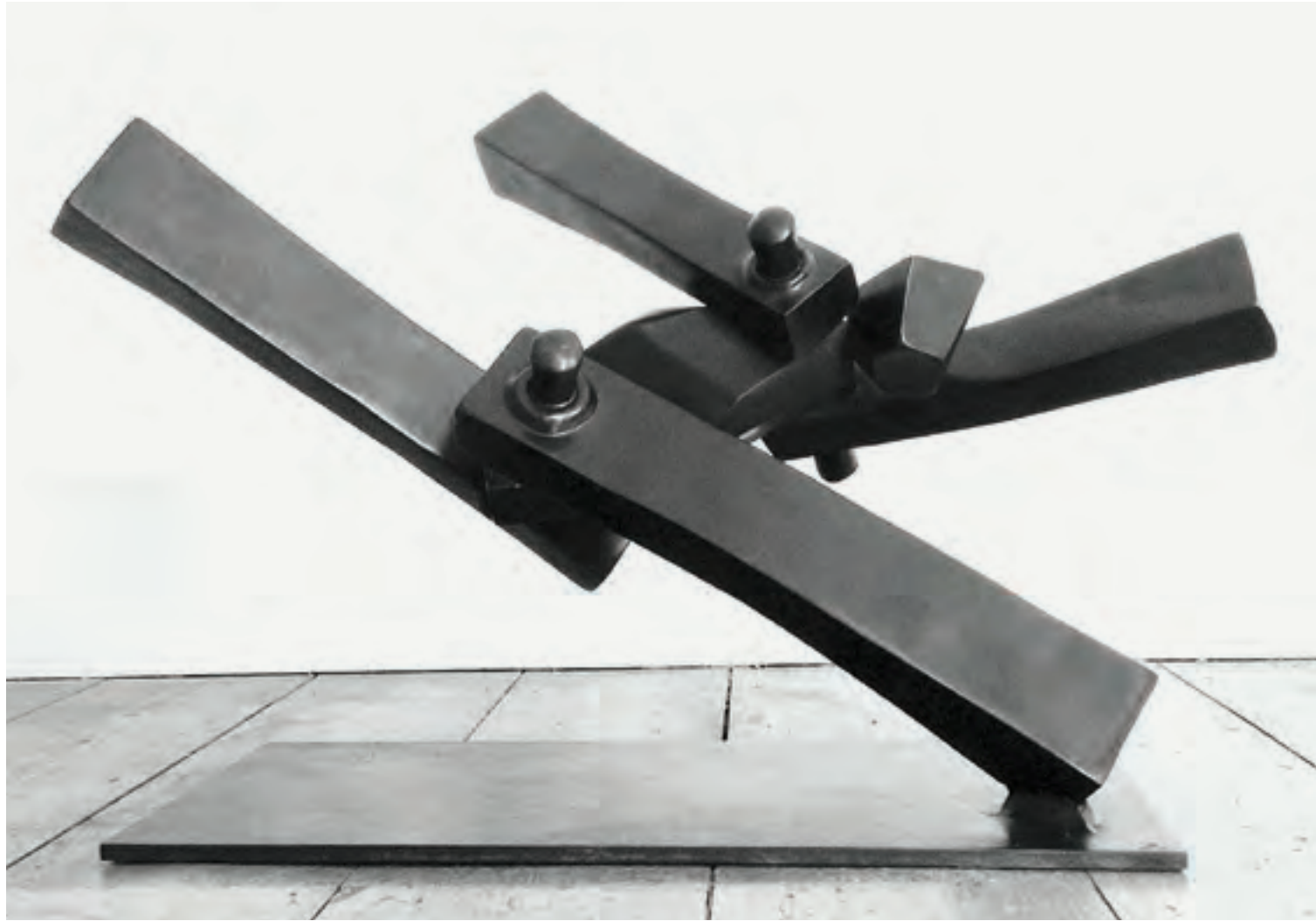


FAR RIGHT

A Tall Hare

by Seamus Connolly
Unique Bronze
210cm





ABOVE

Mission

by Patrick O'Reilly
Bronze
30cm x 60cm

OPPOSITE

Interjection I

by Mel French
Aluminium
46cm x 46cm x 19cm

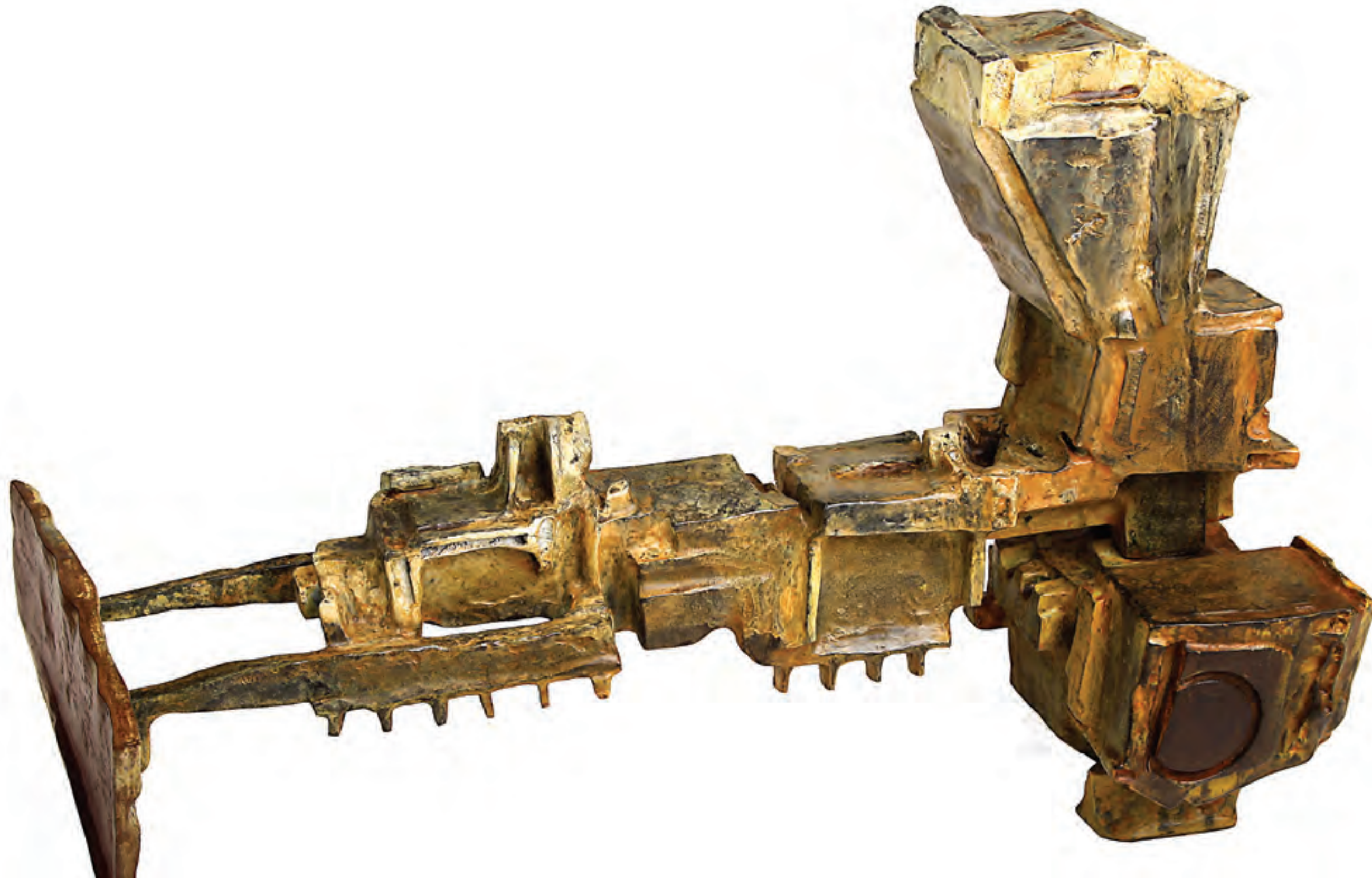




Running Amuck
by Nigel Connell Bass
Stainless Steel
160cm x 70cm x 60cm



Seated Figure
by Gwen Wilkinson
Galvanised Wire Mesh
207cm x 59cm



Landscaping

by Tim Morris

Unique Bronze

447cm x 333cm x 200cm



Janice

by Elizabeth O'Kane
Limited edition 2/5
Bronze
82cm x 27cm x 25cm



Ricardo

by Elizabeth O'Kane
Limited edition 2/5
Bronze
82cm x 27cm x 25cm



Countercurrent

by Vivienne Roche
Unique Bronze and Glass
200cm



ABOVE

Steeplechaser

by Ester Barrett

Unique Bronze

54cm x 98cm

OPPOSITE

Broodmare and Foal

by Ester Barrett

Limited edition 4/5

Bronze

38cm x 48cm



BIOGRAPHIES

Ester Barrett Ester Barrett was born in Limerick in 1979. Ester, a self-taught artist, started painting full time at the age of 15, studying the techniques of the Old Masters and taking advice from artists such as the late Jack Donovan. She attended a bronze casting workshop in Leitrim sculpture centre in November 2010, continuing with mould making, metal work, etc, and casts her work in Co Mayo alongside Tim Morris. Her work is both representational and impressionistic in painting and sculpture and also includes figurative pieces. She has exhibited extensively in group shows in Ireland and abroad and has won two international awards.

Stephen Burke Stephen Burke is an Architectural Sculptor who works from his Studio in Dublin 15. He has worked on many large-scale projects throughout Ireland and the UK, ranging from contemporary public art commissions to restoration to architectural projects. Stephen continues to work on large-scale projects and also on private sculpture and lettering commissions. Restoration practices also inform his new work - by providing a grammar with which to develop new ideas. He is particularly interested in and inspired by working with other people, whether collaborating with other professionals or communities. Stephen also lectures part-time at the City & Guilds of London Art School.

Michelle Byrne Michelle Byrne was born in Dublin in 1971. Michelle now lives and works in the Blackstairs region of Co Carlow. Working primarily in stone and bronze, her group shows include the RHA Annual Exhibition, Eigse, Sculpture In Context and the OPW Exhibition. In 2014 Michelle had a solo show at The Olivier Cornet Gallery, Dublin. Large-scale public art Commissions can be seen in Kilkenny, Cork, Carlow and Navan. Public Collections include the OPW, Irish Management Institute and Delliotte. Awards include The RHA Conor/Moran Award for Sculpture 2012 and the Stonecarving Award at the RDS National crafts Awards, 2015.

Rob Byrne Rob Byrne is primarily a self taught Dublin born artist. Having made the transition from wood and metal, he has found his home with the medium of stone. Inspired by the natural world, Rob aims to convey natures compelled adaptation to human encroachment into it’s habitat. Rob’s work has been shown in exhibitions such as Form, Sculpture in Context and in the Kildare Gallery at Carton House, as well as private collections.

Sonia Caldwell Sonia Caldwell (b.1974) first started working with stone in 1996 during a visit to Zimbabwe. She has never looked back and even though she has worked with many other mediums, in both painting and sculpture, it is to stone to which she keeps coming back. It is the feeling that you are working with a really raw material and trying to keep the delicate balance of trying to control the stone, that makes it such a interesting material to work with. She has explored many subjects in her pieces over the years, but her sculptures remain mostly figurative, as it is the way we live that is a constant source of inspiration to her. These sculptures explore the complexities of how it is part of being human to search for something to make us whole, to feed that spiritual hunger, especially when we have a void within us, something that has left a gaping hole.

John Coll Born in 1956, John Coll has always been amazed by the natural world and intrigued by its structures, textures and relationships, so it seemed natural to study Zoology at NUI Galway, which led to a BSc Hons in Marine Biology. In tandem with this study and as a way of trying to understand the natural world, John drew and sculpted from a young age. So after some years working on a fish farm, at the ripe old age of 27, Coll made the decision to try his hand at sculpture as a profession and 33 years later he is still at it. Since then he has become one of Irelands leading figurative sculptors receiving many commissions including a monument to Patrick Kavanagh, Brendan Behan, Countess Markievicz amongst others. The maritime worlds influence seeps into many of his works and at present he is exploring the materials with which we interact with the marine environment.

BIOGRAPHIES

Nigel Connell Bass Nigel worked for 10 years as a scenic artist in a busy national theatre company production workshop in the UK before settling in West Cork in 1996. Working in many different mediums in both 2D and 3D including Mural painting, pastel portraits and traditional sign painting, he discovered a love of metal sculpture after borrowing a welder to build a balcony railing for his home and using left over materials for his first garden sculpture. His love of animals is reflected in the pieces he creates from both recycled materials and more recently, stainless steel.

Seamus Connolly Seamus Connolly is one of Ireland’s leading bronze sculptors, best known for his highly acclaimed life-size portraits. Seamus runs a bronze foundry in West Clare and rather uniquely, takes all his work from inception in clay, through to being finally cast in bronze in his own workshop. Although his main body of work includes life-size bronze portraits of various public figures, from John B Keane in Listowel to GAA all-star Páidi Ó Sé in Ventry, Co Kerry, his heart, as an artist, definitely lies in his more personal, stylised pieces. He has a fantastic reputation for these individual, quirky sculptures, most of which are inspired by animals and nature and sit particularly well in people’s homes.

Nuala Early Nuala Early is a sculptor based in Drogheda who works in stone and bronze. In 2010 she fulfilled a lifelong ambition and graduated with a Fine Arts degree from Jordanstone College, University of Dundee. It was during this time that Nuala discovered her love of stone carving. After graduating her main focus was on developing her skills as a stone sculptor. She attended stone carving courses in the Leitrim Sculpture Centre and D15 Studios, Dublin. She worked as an assistant at Symposia in Stone Carving, Scotland and Clones, Co Monaghan. Nuala has been mentored Martha Quinn and at the D15 studios by Richie Healy and Stephen Burke. She has exhibited in Sculpture in Context, FORM15@Ballymaloe, Droichead Arts Centre, Listoke House, Co Louth and Negotiations Scotch Hall, Drogheda. Nuala’s work is about the human condition expressed through abstract forms that are often inspired by nature.

Jason Ellis Born in 1965 in Cornwall, UK, Ellis learned stone carving at art school in Sussex in the 1980s and during the next 20 years he concentrated on the sculpture conservation profession in London and throughout Ireland. His art practise went full-time in 2007 and his works now feature in numerous public and private collections. In 2010 he showed at the 12th Venice Architecture Biennale. Public works are sited at Bantry, Co Cork, Galway City, UCD, Christ Church Cathedral and Dublin Castle. He joined the Oliver Sears Gallery in 2011 and held his first solo show there in 2013 and was invited to submit to the National Self-Portrait Collection of Ireland in 2014. His forthcoming solo show, entitled ‘Old Anatomy’, will run from 20th October until 1st December 2016 at the Oliver Sears Gallery, Dublin.

Mel French Mel French was born in London in 1971. Moving to Ireland in 1993, French graduated from the National College of Art and Design (1997) with a First Class Degree in Fine Art (Sculpture) and from The New York Academy of Art (2003), with a Cum Laude Masters in Fine Art (Sculpture). French works predominantly in sculpture, amalgamating traditional skills with contemporary concerns. Creating visceral, often distorted figurative forms and animal hybrids, she combines traditional sculptural techniques with found materials in order to explore the human condition and psyche. Modelling in clay and using applied anatomy techniques, French moulds and casts in various medium such as chocolate, hair, laundry lint, soap, concrete, cast metal, resins or wax in order to more fully elucidate her concepts. The recipient of a number of permanent public art commissions nationwide, her work also features in private collections . French has received various awards for her work including the Prince of Wales Fellowship, The Irish Concrete Society Award for Sculpture and the Thomas Dammann Junior Memorial Trust Award, and has exhibited in various selected exhibitions, as an invited artist, both nationally and internationally. French has been permanently based in Westmeath since returning from New York in 2003.

BIOGRAPHIES

Moss Gaynor Moss Gaynor is a sculptor and designer based in Clonakilty, West Cork. He works primarily with ferrous and non-ferrous metals, often combining the base material with other media such as stone, wood and glass. It is the everchanging dynamic of West Cork, where land meets sea meets sky, which provides an endless source of inspiration for his work. Whilst the natural world may be the catalyst, it is his interest in the man made world of architecture and industrial design that informs much of the aesthetic of the finished piece. His current body of work is influenced heavily by his devotion to the sea, being a self-confessed ‘surf addict’ it is never far from his thoughts...

Richard Healy Richard is a Dublin born artist and graduated from NCAD in 2000 with a Fine Art degree. He has worked primarily in stone since leaving college. His carving practice is based at D15 Studios in Dublin. Richard’s work is greatly influenced by the botanical world. This is apparent in the forms, shapes and textures found in his work. Richard’s work is in a number of private collections in Ireland, Europe and the Far East and he has received a number of public art commissions, two notably at Aras an Uachtarain. He received the RDS carving award in 2011and is a committee member of the annual Sculpture in Context exhibition.

Redmond Herrity Redmond Herrity, who works from his home place of Letterkenny in County Donegal, Ireland, has travelled extensively, creating private and public commissions. During his time in India in the late 1990s, he was inspired by street sculptors and in a later trip to Australia worked with stone for the first time. He graduated from Leitrim Sculpture Centre in Ireland in 2001 and later worked in Carrara, Italy, where he began mastering the ancient techniques of marble portraiture. From classical portraits to modern sculpture, Redmond’s work spans centuries. Recycled Stone, Redmond’s most recent project, represents a conversation between past, present and future. Using stone, the most immutable of media, Redmond has fashioned a conversation among some of society’s most disposable items – the tins and plastics that we use and recycle – while recalling the ancient stories passed on to us across the millennia using the same medium. The ancients carved their gods, left as a story for the future. In this new project, at once playful and provocative, Redmond asks what we are leaving for the generations to come. Is disposable consumerism our god now? But while plastic rubbish takes away from the beauty of our natural surroundings, Redmond’s work in marble and limestone uses that organic and timeless material as a stark contrast to the damaging disposables it is used to represent. Awards: *The Derek Hill Award, Up and coming sculptor 2006. The Connor Moran Award, R.H.A, Sculptor of the year for the most outstanding sculpture 2009. The Derek Hill Award, Overall prize winner*

Bojana Križanec “My work usually starts with the idea. Then I choose the media I am going to use. It could be ceramics, stone, photography, video, performance. I am interested in contrasts like good and bad, black and white, male – female, strong – weak. In ceramics I use strong contrasts in black unglazed surface and white glaze. It emphasizes the graphical effect and helps me tell many stories using just two colours with some help of red or gold. I fell in love with stone few years ago. Stone is bursting with energy. Almost every stone wants to be something. And it wants the artist to help him show it. Work with stone starts slow, like meeting a new friend. More and more time you put in it, the more you get in return. The stone seduces us, entices us to touch it and returns the energy. I shape the stone into organic forms, round and gentle, although heavy in weight.” Bojana Križanec comes from Slovenia. She completed the study of sculpture and ceramics at the Famul Stuart High School for Art in Ljubljana.

BIOGRAPHIES

Robyn Lawlor My name is Robyn Lawlor. I am a self thought artist working mainly in stone, bronze and ceramic. I still have the child like wonder and amazement in the natural world that surrounds, under foot and beneath rock. My chosen mediums for this sculpture are Kilkenny limestone and bronze. The cold sheen of the limestone mirrors the hard armor shell, while the multi segmented spiny legs and antennae are cast in bronze. Beetle Form 1 won the award for Sculpture of Distinction in any medium in the 2013 Sculpture in Context exhibition in the National Botanic Gardens. This particular piece brings together the wonderful world of the micro and the fantastic grotesque scale of the B Movie beast. It is a combination of all the things that fascinate me about the natural world and those that make some people shriek in terror.

Martin Lyttle Martin has always had a passion for the landscape, the rocks and the soil and the processes that have formed the landscape. It was this strong interest that led him into a career in geology and now in stone sculpting. In 2007, Martin took up a long cherished desire to do stone sculpting. He attended the Portland Sculpture and Quarry Trust, Portland, UK for a sculpture course and in the summer of 2008 he attended “Stone Sculpture Symposium” Salzburg International Summer Academy of Fine Arts. The internationally renown tutors were Eileen MacDonagh and Susanne Tunn. In September 2009, he took part in “Sliabh Gearr Granite International Symposium” held in Killann, Enniscorthy, Co Wexford. He also was Eileen MacDonagh’s Assistant for her major exhibition “Lithosphere” at Visual Centre for Contemporary Art, Carlow, Ireland. He is a member of the “9 Stones Artists” with whom he has exhibited on numerous occasions. He recently joined “FORM Designmade in Carlow” which is a group of designer makers and craftspeople living and working in the Co Carlow.

Eileen McDonagh Stone has been my medium for almost 30 years. With patience and a real desire it is possible to do almost anything with this material. The need to realize an idea in stone must always be stronger than the effort required to carry it out. It is a long slow process whither working on a big or small scale. There is a lot of time to consider what you are doing, make changes along the way and find out a bit more about the material (and yourself). When working with limestone I tend to carve and shape the stone quite a bit. On the other hand with granite if I am lucky the material will reveal to me what I should do with it.

Tim Morris Tim Morris was born in Wicklow in 1965. He served his apprenticeship as stonecutter with Roe and O’Neill’s granite quarry from 1980-1984. From 1985-1987 Tim studied under the American Sculptor Robert Schoen at his studio in Carrara, Italy. Tim Morris is represented in Ireland by Taylor Galleries, Dublin.

David O’Brien David O’Brien finished his education in 1999 and in doing so he won the NCEA prize for design in model making and special effects for film and television. Having graduated he worked for the Bronze Art Foundry before moving to Australia in 2001 to work in sculptural and model making projects. He returned to Ireland and Bronze Art in 2003 and in 2008 he took over there as the managing director where he remains to this day running one of Irelands foremost foundries. He is an accomplished sculpture in his own right and also has an interest in sword and jewelry making.

Elizabeth O’Kane Elizabeth is interested in anatomy, expression and movement. Her sculptures generally follow the realist tradition, however her stone carvings are often more abstract, and she paints architectural watercolour paintings. She has been awarded sculpture and painting prizes from the RHA, Oireachtas, the Watercolour Society of Ireland, and the Ulster Watercolour Society. Elizabeth studied figurative sculpture part time at the Florence Academy of Art in Italy and at the Art Students League of New York. She has lectured in portrait sculpture to the Friends of The National Gallery of Ireland and at the Institute of Art, Design and Technology in Dun Laoghaire. She teaches portrait sculpture classes in her Dublin studio. Collectors include The Department of Foreign Affairs and Trade, The Iveagh Gardens, The National Concert Hall, University College Dublin, The Irish Rugby Football Union, Carton House Hotel and Belfast City Hall.

BIOGRAPHIES

Niall O’Neill Over the past 30 years Niall O’Neill has been involved in the creation and delivery of public and private artworks throughout Ireland, both in an urban and non-urban setting. He was lecturer in Sculpture at the Institute for Art, Design and Technology in Dublin (now IADT) for 25 years. He is a co-founder of ‘Umha Aois,’ the experimental bronze-casting organisation and is former chairman of Visual Artists Ireland (formerly the Sculptors’ Society of Ireland), the professional body representing visual artists in Ireland. He is also a member of the professional artists collaborative ‘Deiseal.’ He has been involved in organising many exhibitions and symposia, including Sculpture in Context, Dublin. His recent public commissions include ‘Boat Stele,’ Co Waterford, ‘Geata na nEalaí,’ Co Dublin, ‘Horse Play,’ Co Wicklow, ‘Folded’ for Wicklow County Council and ‘Fios’ for St Nessan’s National School in Co Limerick.

Cormac O’Reilly I started working as a mason with my Dad when I was seventeen years old. In sculpture I am primarily self-taught but have a deep respect for formally trained sculptors, some of whom have been good enough to help me in my development over these past few years. Into my own work I try to channel two things; the beauty that is all around us and that sometimes we are worthy of it.

Patrick O’Reilly Patrick O’ Reilly is a highly acclaimed international sculptor who is based in Dublin with studios in the Auvergne, France and Long Island City New York. His work largely his studies of human nature. Patrick is an avid reader of philosophy and the history of ideas. Taken as a whole, his work reflects an intensely personal search for a lost paradise. O’Reilly has exhibited throughout Europe and is represented by leading Galleries in London (Mayor Gallery), Paris (Galerie Vallois), Brussels, Holland, Vienna and Germany. He exhibits regularity in Gallery Vallois, Madison Avenue NYC. His one-man show in the Hugh Lane Museum was critically acclaimed. His sculptural pieces can be monumental in scale and he often uses the animal kingdom to express his sentiments and fears about life. O’Reilly is a sculpture of his time, his work contemporary in nature and he is profoundly and personally involved in each individual stage of the creation of each exceptional piece.

Krystyna Pomeroy Krystyna Pomeroy lives on the Loop Head peninsula in Co Clare. Whether working in the medium of clay, paper or metal, the primary focus is on form, followed closely by the ‘how’ of construction. Initial sketches evolve into 3D blueprints. In many of her animal sculptures there is a paring down to essential features and the use of flat planes. Over the past thirty years, Krystyna has exhibited in a number of galleries in Ireland and the UK. Her most recent works in bronze have sold through Adam’s of Dublin and Artistic Alliance, Cork.

Michael Quane Michael Quane’s work is wrought into existence from his practice of drawing on paper and carving of stone. Fundamental to his sculpture is an awareness of gravity as a persistent presence around him in the physical world. As Quane explains “this awareness is referred to in the series of works Gravity Swimmers which perhaps, as an expression, is notional that gravity is an atheistic God surrogate, being metaphysically the medium through which we swim and is his expression of a scientific understanding that geologically and astronomically gravity imposes order on what would otherwise be a chaotic universe. It is the invisibility that shapes the planets and fuses stars, maintains orbits, and governs galaxies. Having some metaphysical equivalence to and conversion with gravity is medium; the very stuff that life is supported and surrounded by; air, water, amniotic fluid. It is this preoccupation that brought to life the series of works called Buoyed and A-Shebuoyed (a-shebuoyed is derived from amoeboid). The sobriety and weightiness of these thoughts of gravity is sometimes countered lightheartedly by buoyed’s inflatability.” He works with what appears to be an intractable material, stone, however he returns time and again to the elemental practice of drawing with the chisel on its surface. The stone and chisel together provides Quane with an immediacy similar to pencil and charcoal on paper but with the added facility, through repeated scrapings with the chisel, of drawing the rough hewn surface of the rock into deliberate form. Michael Quane, born in 1962, lives and works in Co Cork. He has exhibited throughout Ireland, UK, Western Europe, and the US. His work is present in private and public collections throughout. He is a member of Aosdána and was elected a full member of the RHA in 2004.

BIOGRAPHIES

Martha Quinn Martha Quinn was born in Ireland in 1975 and studied at DLIADT from 1992-1995 graduating with a distinction in sculpture and print. During the past 20 years Martha Quinn has gained a national reputation through her sculpture, paperworks (drawings, prints and cut-paperwork) and most notably her numerous public sculptures. Her practice is informed and inspired by a wide variety of subjects including science, nature, craft, and architecture, these interests often manifest in abstract geometric patterns and structures. A key element in Quinn’s public sculptures has been to create artwork that is integrated with its physical and geographical environment but also with its social, historical and cultural context also, and so each work is completely site-specific. She lives with her three children in Co Sligo and works from her purpose built studio workshop.

Vivienne Roche Vivienne Roche R.H.A. is a member of Aosdana. She received an honorary doctorate from UCC in 2006 and CIT Alumni Award in 2010. She has made many large-scale public sculptures including *Wave Shadow* at Dublin Dental Hospital, *Light Ensemble*, CIT Cork School of Music and *Whitelight Garden*, Parkwest Pointe. She was part of the design team (with Mola Architecture) who delivered the *Diving Bell* for the Port of Dublin last year. www.vivienneroche.com

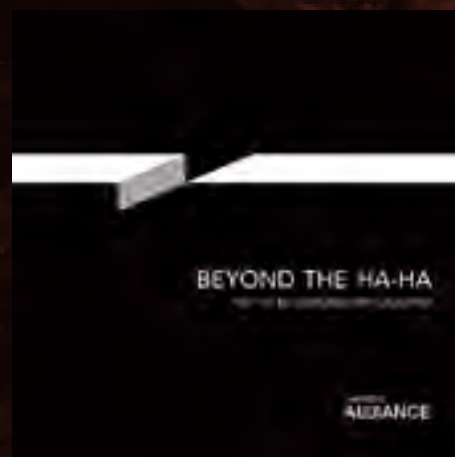
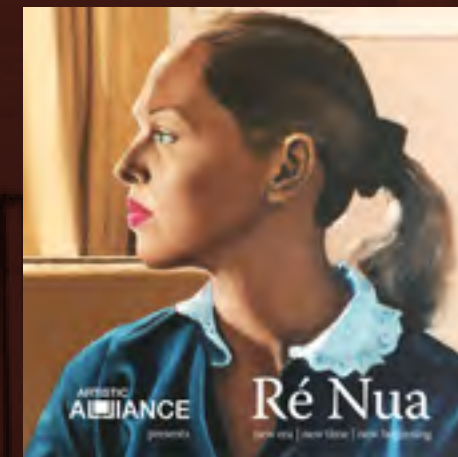
Blessing Sayanga Blessing is a self-taught sculptor born into a family of artists. His inspiration comes from day to day life, dreams, imagination and the earth itself. Many of his sculptures are filled with human culture, wildlife, nature and are overflowing with feeling. Blessing’s sculptures are original and one offs. In most cases he works straight into the stone without creating a model. Only a handful of sculptures that he makes are created from sketches and models. Blessing uses more of a photographic memory from the images of artefacts that evolve in his imagination and sometimes the medium itself will say what it wishes to be, due to its natural features and he feels that every stone has a secret story to tell. Blessing won the New Ireland Assurance Sculpture Award for a large outdoor work of distinction at the 2014 Sculpture in Context exhibition at the Botanic Gardens.

Matthew Thompson Matthew Thompson is a sculptor who works mostly in stone but also in wood. He trained as a stone carver with his father, Ken Thompsons, from the age of 19 where he continued to work for seven years. During this time he gained experience working on many large projects for public spaces. He also spent three years living in Cararra, Italy, a town in the foothills of the mountains where Michaelangelo sourced his marble. Here he worked in the Nicoli workshop, now a UNESCO world heritage site where he learned to work in a wide variety of different stones from all over the world and was exposed to many diverse influences from sculptors of many different countries and cultures. Matthew has been working at his own workshop in East Cork for the last ten years where he works on commissions and also towards exhibitions. He still collaborates with his father on large projects.

Gwen Wilkinson Gwen is a visual artist living in County Carlow. She studied for her Masters Degree in Fine Art at the National College of Art and Design, Dublin. Her practice includes sculpture and photography. Her figurative sculptures are created using a diverse range of materials and techniques including, wire mesh, torn and stitched paper, and decoupage. The works represent animal and human forms and she tries to instill a sense of movement and energy into each piece of work. Gwen began exploring the medium of galvanised wire mesh sculpture in 2000. Since then she has created hundreds of pieces of work for clients in Ireland, UK, USA and Australia.



Previous shows by
**ARTISTIC
ALLIANCE**





FRINGE@FORM



Edel O'Halloran

The earliest known mosaics date back to the third millennium BC which were excavated from a temple in Mesopotamia. Examples of the first glazed tiles were discovered in around the year 1500BC. The Greeks further developed mosaic techniques and materials from the 5th century BC onwards. Today, thousands of years later, surprisingly little has changed in this ancient art form. Laying methods, and to some extent materials, like pebbles and marble, remain exactly the same. As in former millennia, mosaicists today also strive to capture the wonders of the natural world around us, taking inspiration particularly from animal and marine life.

Edel discovered her passion for mosaic while she lived in Rome. Her pieces convey both elegance and simplicity, each work evoking a different atmosphere and mood, depending on how the light is reflected by each individual stone she hand cuts and lays. The charm of her work lies in the subtle marriage of ancient techniques and Irish motifs.

LEFT

Fastnet Rock

by Edel O'Halloran

Mosaic

100cm x 60cm

ABOVE

Puffin

by Edel O'Halloran

Mosaic

35cm x 43cm

This page:

Tide nor Time (Outcrop)

by Moss Gaynor

Stainless Steel and Corten Steel

Back cover:

Contemplation

by Krystina Pomeroy

Bronze

Edition 1/9

46cm

Acknowledgements

First and foremost I would like to thank all the artists who make my job so enjoyable, inspirational and stimulating. Thanks to Alan O'Shea of aosdesign, John Beasley Photography and John Waterman Printing for being the engine house that produces this book. Thanks to all at Ballymaloe House and Shop but especial thanks to Darren Allen, Brendan O'Regan and Johnny Daly on Ballymaloe Farm for all their help, expertise and toys. And finally to my late brother Ronan in the year of his tenth anniversary, may I thank you for being a great help to me on occasions, albeit it from a distance now.

Photography:

John Beasley

Tiffany Budd

Christian Haubold

Ross Kavanagh

John Kellett

Aine Rua

Leon Gibbin





ARTISTIC
ALLIANCE

Price €5

designed by aosdesign | printed by Watermans Printers